

B35

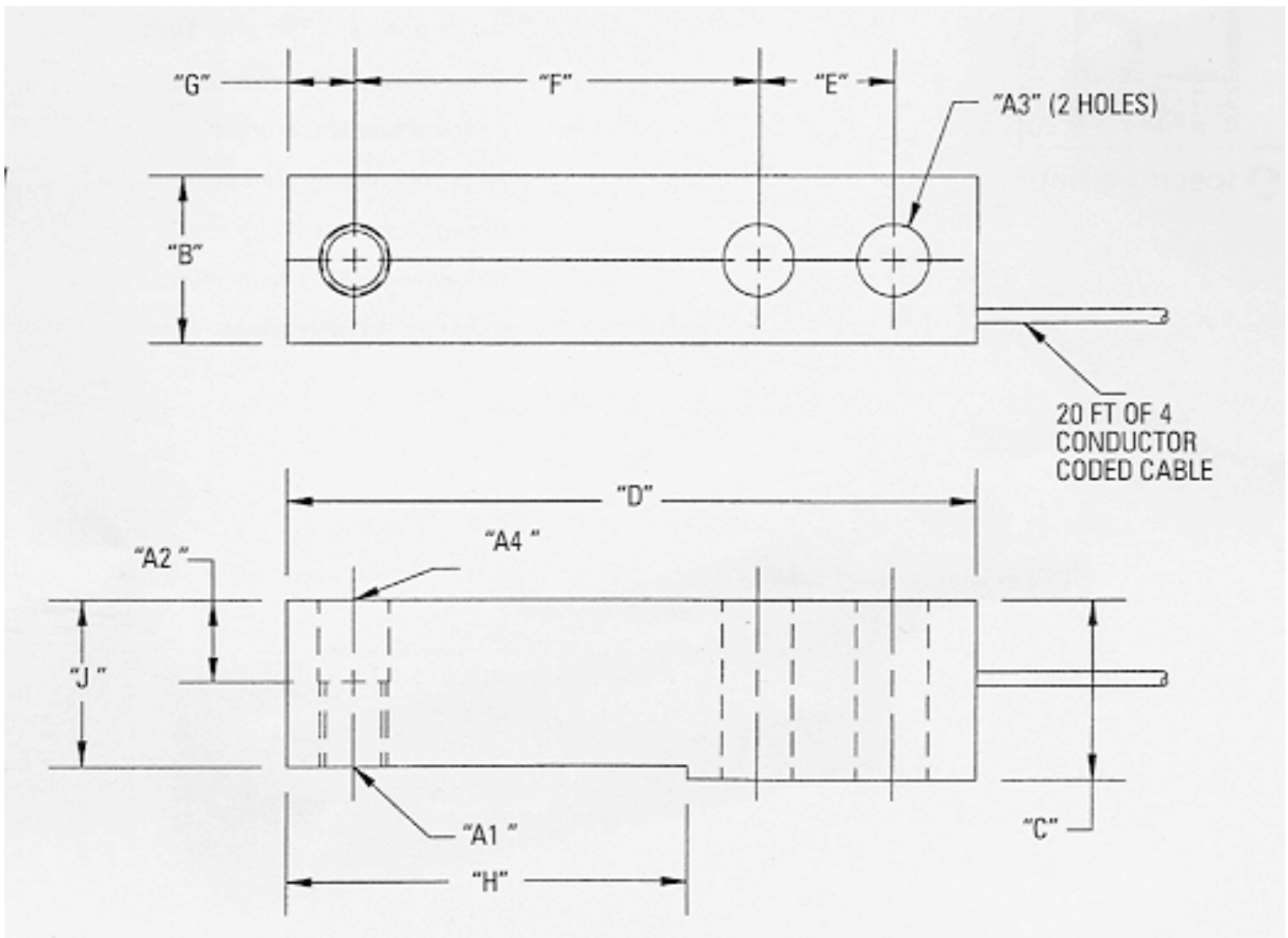
BENDING BEAM LOAD CELL

STAINLESS STEEL CONSTRUCTION
3 MV/V OUTPUT, 350 OHM BRIDGE
ENVIRONMENTAL SEALING
AVAILABLE NTEP CERTIFIED
C OF C NUMBER 88-278A1



500, 1k, 2k, 2.5k, 3k, 4k, 5k, 10k, 20k

The B35 is the latest introduction to the popular beam line. The B35 offers all stainless steel construction and integral mounting foot as well as dimensional and electrical interchangeability with several load cell manufacturers.



Dimensions (inches)

CAPACITY	A1	A2	A3	A4	B	C	D	E	F	G	H	J
500, UNF-2B	-20	.50	.53	.53	1.21	1.0	5.12	1.00	3.00	.50	2.85	.93
1K-4K Lbs UNF-2B	-20	.62	.53	.53	1.21	1.19	5.12	1.00	3.00	.50	2.85	1.12
5K&10k lbs UNF-2B	-16	.75	.78	.78	1.44	1.44	6.75	1.50	3.75	.75	3.75	1.337

Rated capacities	Lbs	500, 1K, 2K, 2.5K, 3K, 4K, 5K, 10K
Rated output	mV/V	3.0 +/- 0.010
Combined error	%	0.04
Nonrepeatability	%	0.01
Creep in 20 min.	%	0.03
Zero balance	%	2.0
Compensated temp. range	F/ C	+14 ...+104 / -10 ...+40
Temperature effects on rated output	% of load / 100 F	0.15
Temperature effects on zero balance	% / 100 F	0.25
Terminal resistance -- input	min. ohms	350
Terminal resistance -- output	nom. ohms	350 +/- 3
Excitation voltage	Max vdc / Vac rms	10 / 15
Insulation resistance	min. Mohms	5,000
Max. safe load	%	150
Ultimate load, ultimate	%	300
Max. side load	%	150
Deflection at rated load	Inches	0.10
Weight	Lbs	500-4K, 2.5 lbs; 5K/10K, 4.5 lbs

Percentages relative to rated output, except as noted.

Cable color code

RED	+EXT
BLACK	-EXT
GREEN	+SIG
WHITE	-SIG
SHIELD	SHIELD

More technical information available upon request of data sheet. REQUEST CERTIFIED DRAWINGS BEFORE DESIGNING; MOUNTINGS OR FIXTURES. DIMENSIONS AND SPECIFICATIONS ARE SUBJECT TO CHANGE WITHOUT NOTICE.