

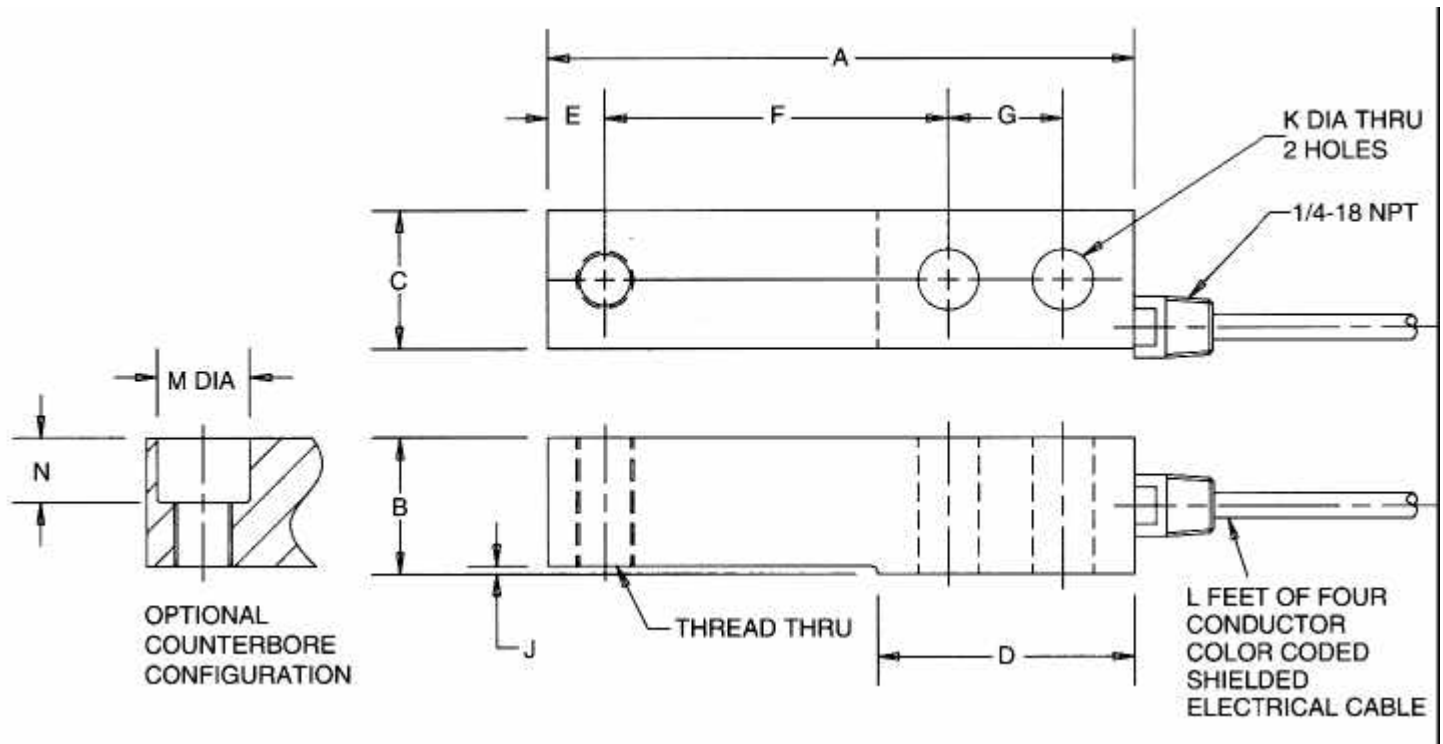
HLC

HERMETICALLY SEALED BEAM LOAD CELL



- HERMETICALLY SEALED
- STAINLESS STEEL
- LOW PROFILE
- AVAILABLE WITH COUNTERBORED LOAD HOLE
- AVAILABLE NTEP CERTIFIED

HBM's HLC is a hermetically sealed version of the well proven BLC beam load cell. The stainless steel construction in combination with the hermetic seal makes this an ideal transducer for harsh or caustic environments as well as wash down applications. As with the BLC, the HLC is easily interchangeable with other similar sized load cells and requires no additional spacer for installation. **Sorry, not available in the U.S.**



Dimensions (inches)

CAPACITY Lbs	A	B	C	D	E	F	G	J	K	L	M	N	THREAD
1.25, 2.5K, 4K	5.25	1.19	1.21	2.27	.605	3.00	1.0	.07	.52	10	.81	.56	1/2-20 UNF-2B
5K	6.75	1.44	1.45	3.00	.75	3.75	1.5	.10	.78	20	1.19	.67	3/4-16 UNF-2B
10K	6.75	1.69	1.69	3.00	.75	3.75	1.5	.10	.78	20	1.19	.79	3/4-16 UNF-2B

Technical Data

Rated capacities	Lbs	1.25K	2.5K	4K	5K	10K
Rated output	mV/V			2.0 +/- 0.002		
Combined error	%			0.03		
Nonrepeatability	%			0.01		
Creep in 20 min.	%			0.03		
Zero balance	%			1.0		
Compensated temp. range	°F/°C			+15°...+114° / -10°...+40°		
Temperature effects on rated output	% of load / 100°F			0.08		
Temperature effects on zero balance	% / 100°F			0.25		
Terminal resistance – input	min. ohms			350		
Terminal resistance – output	nom. ohms			350		
Excitation voltage	Max vdc or ac rms			15		
Insulation resistance	min. Mohms			5000		
Max. safe load	%			150		
Ultimate overload	%			300		
Max. side load	%			100		
Side load rejection	%			500.1		
Deflection at rated load	Inches	0.010	0.010	0.010	0.012	0.012
Weight	Lbs	2	2	2	3.5	4.5

Percentages relative to rated output, except as noted. More technical information available upon request of data sheet. REQUEST CERTIFIED DRAWINGS BEFORE DESIGNING; MOUNTINGS OR FIXTURES. DIMENSIONS AND SPECIFICATIONS ARE SUBJECT TO CHANGE WITHOUT NOTICE.

Hottinger Baldwin Measurements, Inc. 19 Bartlett St., Marlborough, MA 01752 USA
Phone: (508) 624-4500 Fax: (508) 485-5812 E-Mail: gageland@hbminc.com