

# JRT

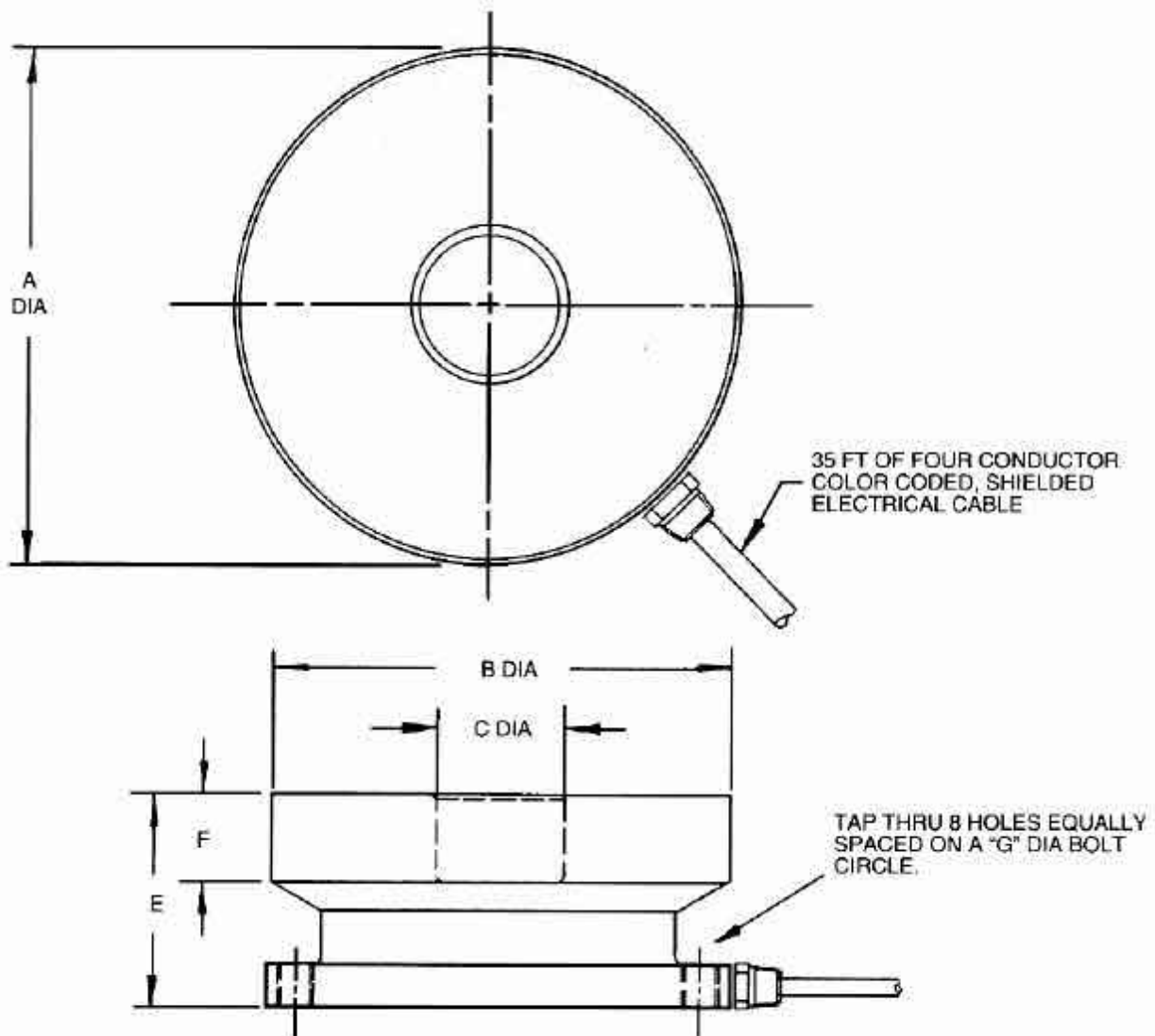
## TORSION RING TRANSDUCER

LOW PROFILE  
HIGH LOAD CAPACITY  
ADVANCED TORSION RING DESIGN  
AVAILABLE NTEP CERTIFIED



20k lb ... 50k lb ... 100k lb

The JRT utilizes a unique torsion ring design and is intended for high capacity loading in tank, vessel and truck weighing applications. The design accommodates the highly accurate rocker pin load introduction technique.



### Dimensions

CAPACITY	A	B	C	E	F	G	TAP THRU
20K	4.50	4.416	1.00	2.00	.75	3.925	3/8-24 UNF
50K	5.50	5.416	1.50	2.50	1.00	4.761	7/16-20 UNF
100K	5.50	5.416	1.50	2.63	1.13	4.761	7/16-20 UNF

## Technical Data

Rated capacities	Lbs	20K	50K	100K
Rated output	mV/V		0.002 +/- 0.002	
Combined error	%		0.03	
Nonrepeatability	%		0.01	
Creep in 20 minutes	%		0.03	
Zero balance	%		1.0	
Compensated temp. range	°F/°C		+15°...+115° /-10°...+45°	
Temperature effects on rated output	% of load / 100°F		0.08	
Temperature effects on zero balance	% / 100°F		0.15	
Terminal resistance – input	min. Ohm		750	
Terminal resistance – output	Ohm		700 +/- 5	
Excitation voltage	Max Vdc or Vac rms		20	
Insulation resistance	min. Mohm		5000	
Max. safe load	%		150	
Ultimate overload	%		300	
Max. side load	%		50	
Deflection at rated load		0.007	0.007	0.008
Weight without optional base plate	Lbs	4	12	12

Percentages relative to rated output, except as noted. More technical information available upon request of data sheet. REQUEST CERTIFIED DRAWINGS BEFORE DESIGNING; MOUNTINGS OR FIXTURES. DIMENSIONS AND SPECIFICATIONS ARE SUBJECT TO CHANGE WITHOUT NOTICE.

**Hottinger Baldwin Measurements, Inc. 19 Bartlett St., Marlborough, MA 01752 USA**

**Phone: (508) 624-4500 Fax: (508) 485-5812 E-Mail: [gageland@hbminc.com](mailto:gageland@hbminc.com)**