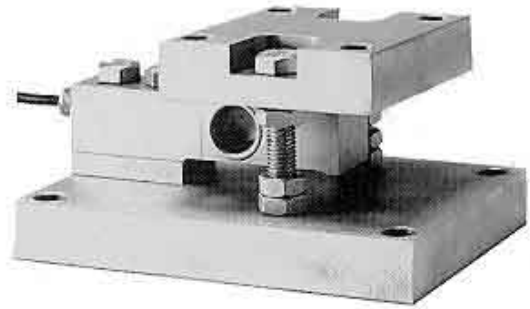


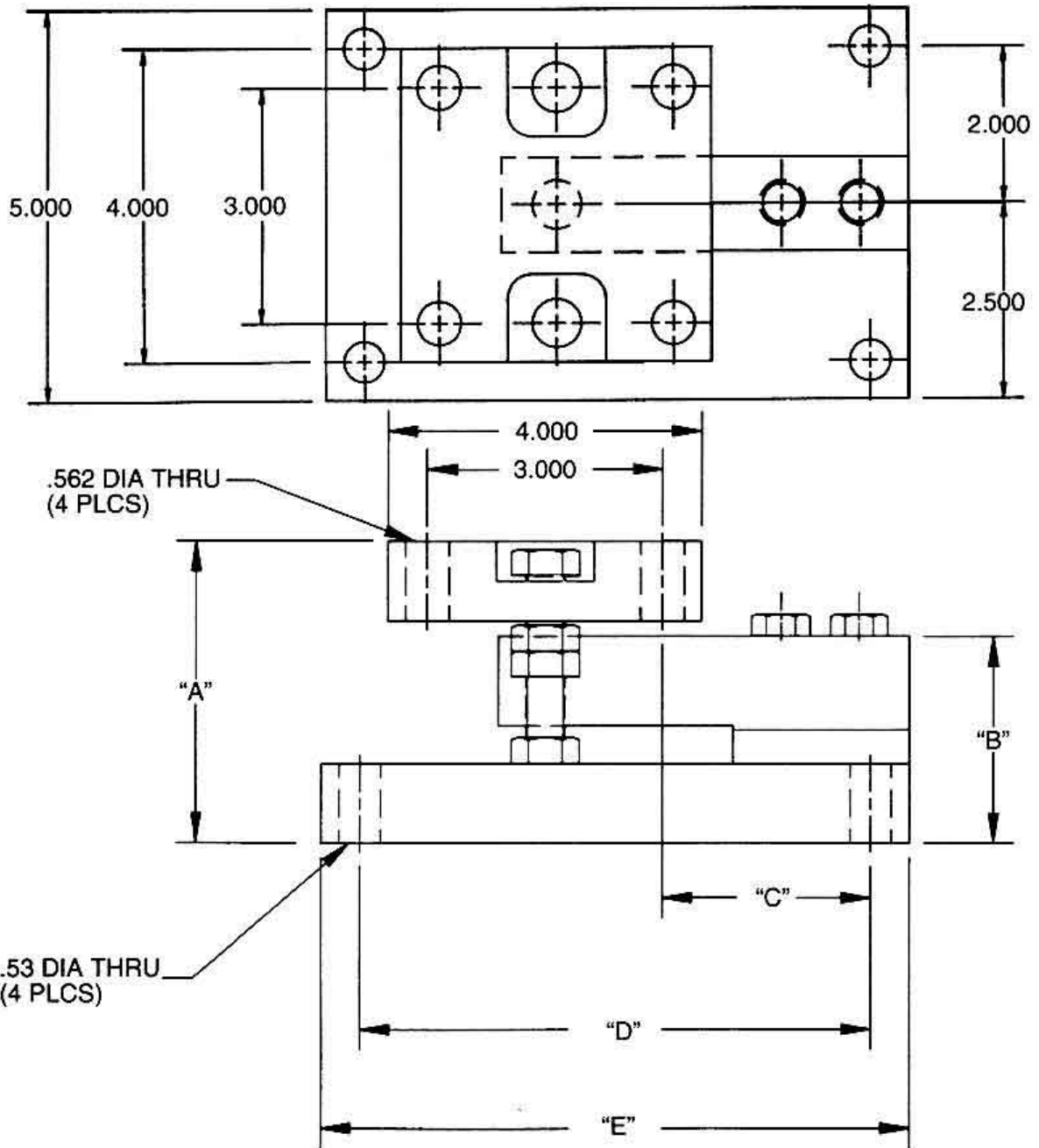
RTM

TANK WEIGH MODULE

- STAINLESS STEEL CONSTRUCTION
- OVERLOAD AND OVERLIFT PROTECTION
- ROCKER PIN LOADING
- HERMETICALLY SEALED
- INTEGRAL LATERAL STOPS
- 500,1k,2.5k,4k lb, 5k,10k lb**



The load cell in the RTM Weigh Module is ideal for lower capacity tank and vessel weighing applications. All major components are stainless steel. The load cell is hermetically sealed for protection against adverse conditions.



Dimensions

CAPACITY	A	B	C	D	E	CABLE LENGTH
500-2.5K	3.782	2.590	2.650	6.500	7.500	15'
4K	3.946	2.590	2.650	6.500	7.500	15'
5K	4.030	2.838	2.650	6.500	7.500	15'
10K	4.280	3.088	3.900	7.500	7.500	30'

Technical Data

Rated capacities	Klbs	0.5	1.25	2.5	4	5	10
Rated output	mV/V	2.0 +/- 0.2					
Combined error	%	0.03					
Nonrepeatability	%	0.01					
Creep in 20 minutes	%	0.03					
Zero balance	%	1.0					
Compensated temp. range	F/ C	+15 ...+104 /-10 ...+40					
Temperature effects on rated output	% of load / 100 F/40 C	0.08					
Temperature effects on zero balance	% / 100 F/40 C	0.25					
Terminal resistance – input	min. Ohm	350					
Terminal resistance – output	nom. Ohm	350					
Excitation voltage	Max Vdc or Vac rms	15					
Insulation resistance	min. Mohm	5000					
Max. safe load	%	150					
Ultimate overload	%	300					
Max. safe side load	%	100					
Deflection at rated load	%	0.010	0.010	0.010	0.010	0.010	0.012
Weight	Lbs	16.4	16.4	16.4	16.4	18	20.5

Percentages relative to rated output, except as noted. More technical information available upon request of data sheet. REQUEST CERTIFIED DRAWINGS BEFORE DESIGNING; MOUNTINGS OR FIXTURES. DIMENSIONS AND SPECIFICATIONS ARE SUBJECT TO CHANGE WITHOUT NOTICE.