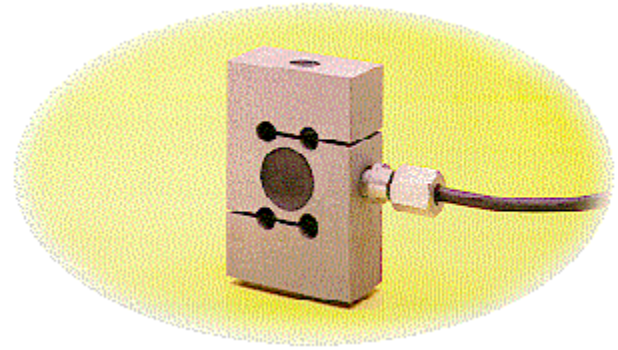


S35

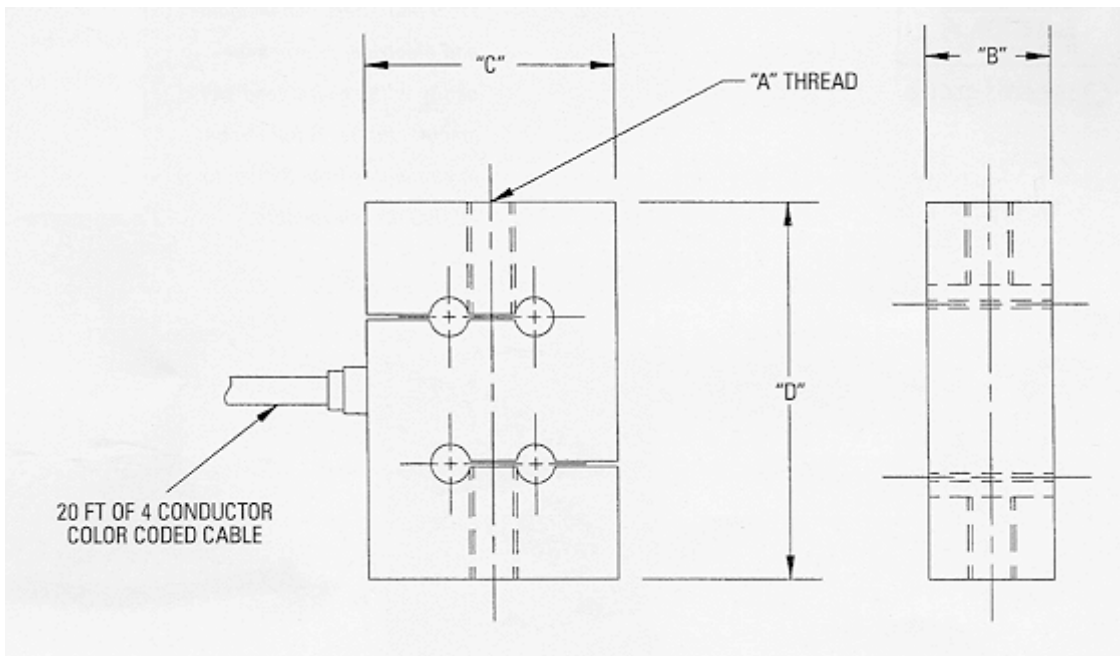
UNIVERSAL LOAD CELL

STAINLESS STEEL
 3 MV/V OUTPUT, 350 OHM BRIDGE
 ENVIRONMENTAL SEALING TO 1P66

100,200,300,500,750,1k,2k lb
2.5k, 3k lb
5k, 10k lb
15k
20k



The S35 Universal "S" cell is constructed in stainless steel and offers dimensional and electrical interchangeability with several load cell manufacturers. A full range of capacities from 50 lbs to 20,000 lbs is available.



Capacity (Pounds)	Dimensions (Inches)				WEIGHT
	A	B	C	D	
100/200	-28 UNF-2B	.63	2.00	2.50	1 lb
300	3/8-24 UNF-2B	.63	2.00	3.00	1.25 lbs
500/3,000	-20 UNF-2B	1.00	2.00	3.00	1.85 lbs
5,000	-16 UNF-2B	1.00	3.00	4.25	3.85 lbs
10,000	-16 UNF-2B	1.00	3.50	4.75	5 lbs
15,000	1-1/4 UNF-2B	1.50	4.00	5.50	10 lbs
20,000	1-1/4-12 UNF-2B	2.00	5.00	7.00	22 lbs

Rated capacity	lbs	100, 200, 300, 500, 750, 1K, 2K, 2.5K, 3K, 5K, 10K, 15K, 20K
Rated output	mV/V	3.5 +25%/-10%
Combined error		0.03
Nonrepeatability	%	.01
Creep in 60 min.	%	+/- 0.05
Zero balance	%	1.0
Compensated Temp. Range	°F	+14 to +104
Temperature effect	Output (% of load/100 F)	0.08
	Zero balance (%/100 F)	0.25
Terminal resistance	Input (ohms min.)	350
	Output (ohms)	350 +/- 3
Excitation voltage	Max VDC or VAC rms	15
Insulation resistance	Megohms minimum	10K
Max. load, safe	%	150
Max. load, ultimate	%	300

Percentages relative to rated output, except as noted. More technical information available upon request of data sheet. REQUEST CERTIFIED DRAWINGS BEFORE DESIGNING; MOUNTINGS OR FIXTURES. DIMENSIONS AND SPECIFICATIONS ARE SUBJECT TO CHANGE WITHOUT NOTICE.